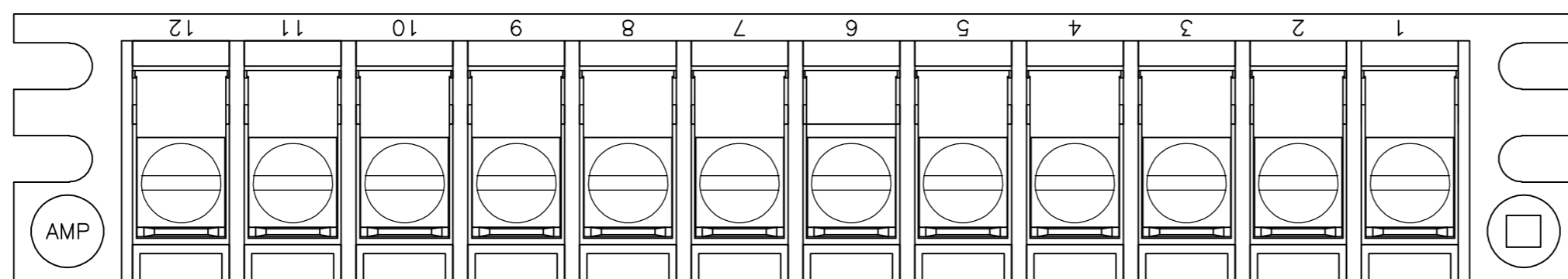


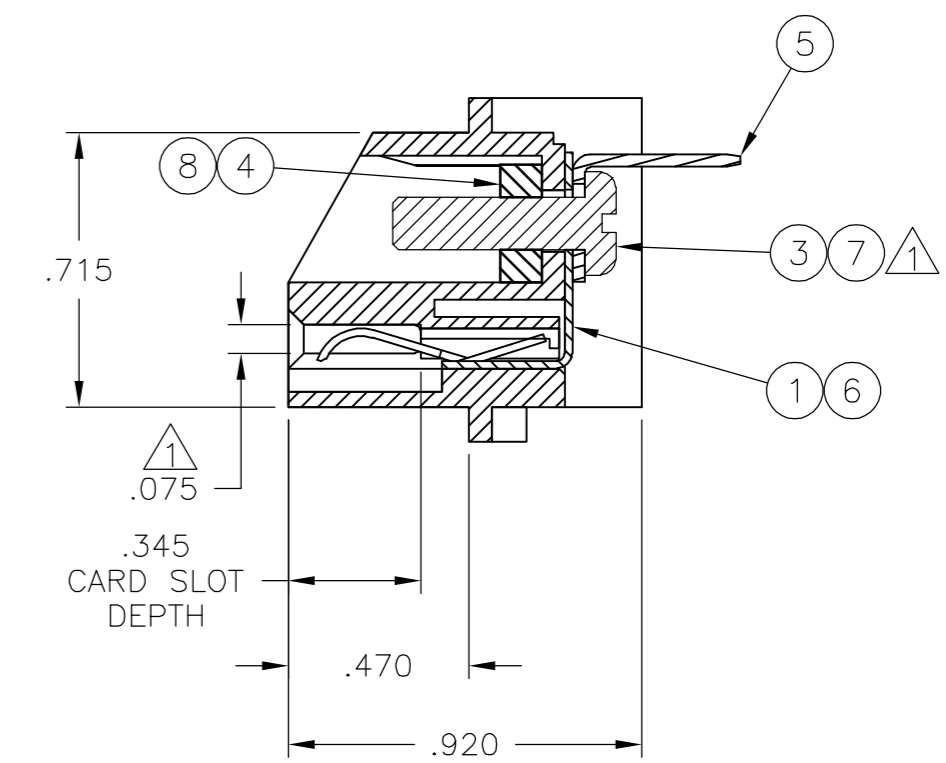
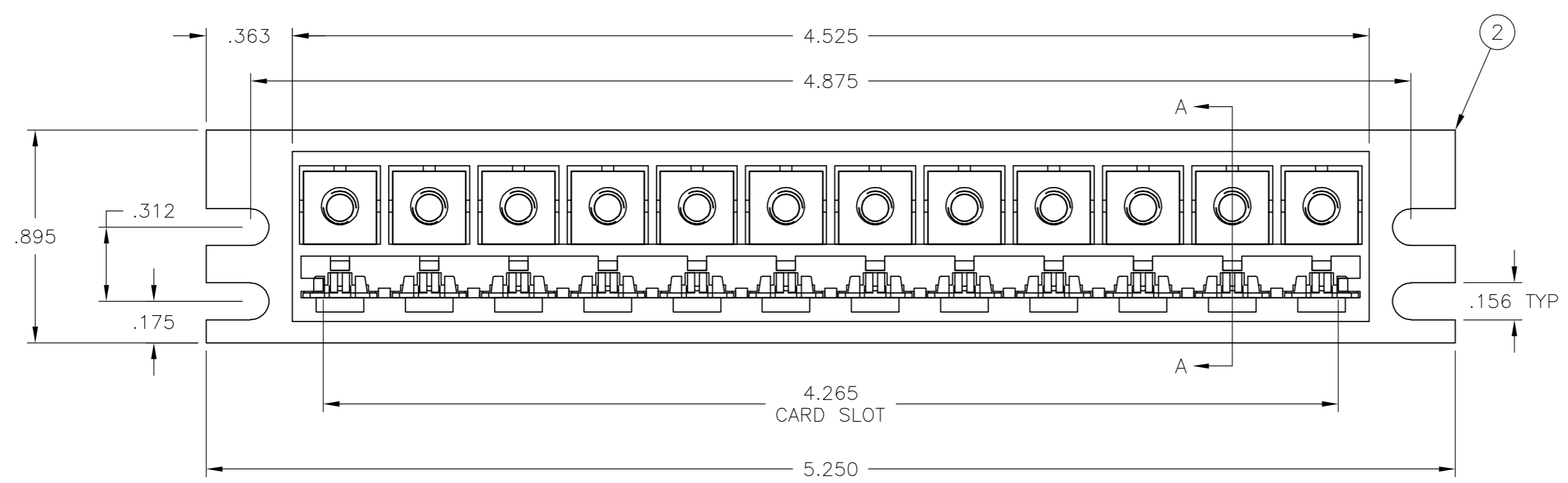
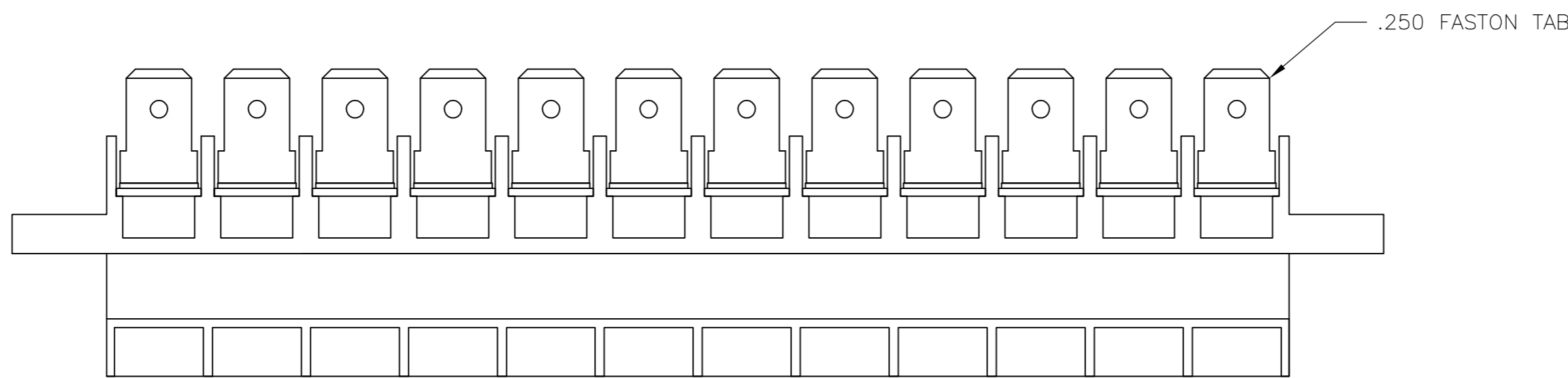
THIS DRAWING IS UNPUBLISHED. RELEASED FOR PUBLICATION
 © COPYRIGHT BY TYCO ELECTRONICS CORPORATION. ALL RIGHTS RESERVED.

LOC	DIST	REVISIONS					
FT	0	P	LTR	DESCRIPTION	DATE	DWN	APVD
		E		REVISED PER ECO-06-6023	3/30/06	SS	DC



.325 TYP

ACCEPTS .062±.007 THK PCB.
 2. MAX ALLOWABLE BOW TO BE .003 PER INCH OF HOUSING.



QTY	DESCRIPTION	MATERIAL & FINISH	ITEM NO.
12	6-32 NUT, STEEL	STEEL, ZINC W/ NON-HEXAVALENT CHROMATE	8
12	6-32 SCREW, STEEL	STEEL, ZINC W/ NON-HEXAVALENT CHROMATE	7
12	CONTACT	.020 PHOS BRZ, TIN PLATED	6
12	12 FASTON TAB	.020 PHOS BRZ, TIN PLATED	5
-	12 6-32 NUT	STEEL, ZINC W/ HEXAVALENT CHROMATE	4
-	12 6-32 SCREW	STEEL, ZINC W/ HEXAVALENT CHROMATE	3
1	1 HOUSING	POLYCARBONATE, COLOR: GRAY	2
-	12 CONTACT	.020 PHOS BRZ, TIN-LEAD PLATED	1

THIS DRAWING IS A CONTROLLED DOCUMENT.

DWN	S SCHLEGEL	28MAR2006
CHK	-	-
APVD	-	-
PRODUCT SPEC	-	-
APPLICATION SPEC	-	-
WEIGHT	-	-
CUSTOMER DRAWING	SCALE 2:1	SHEET 1 of 1

tyco Electronics Tyco Electronics Corporation
Harrisburg, PA 17105-3608

12 CIRCUIT MULTIPLE TAP EDGE CONNECTOR ASSY

SIZE A2 CAGE CODE 00779 DRAWING NO C=350883 RESTRICTED TO -